

Monocrystalline Solar Module

We are pleased to introduce the state-of-the-art LG photovoltaic module with 25 years of in-depth R&D and more than half century of consumer electronics technology and services. LG photovoltaic module is perfect for on-grid general applications, such as residential, commercial, or utilities. With reliable materials, unique design, and systematic quality assurance, we promise our customers to provide with unmatched product values and services. Let LG's electronics experience support your business with proven reliability.



LG Cell Technology

With 25 years of devoted and thorough R&D, LG has successfully developed the Solar Cell both state-of-the-art and credible.



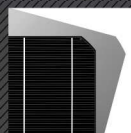
Plus-only Power Tolerance

LG delivers its every product with world's strict and systematic product assurance. Nominal power tolerance starts from 0%.



Superior Durability

Withstanding the maximum load of 5400Pa, it still is very light in weight with slim glass and very solid in module sustainability.



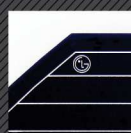
Reliable Materials

LG only selects the world's most reliable suppliers who produce materials proven to be the best quality in the industry.



Unique Frame Design

LG photovoltaic module is uniquely designed to drain liquid even when installed in any slopes and angles. The frames are designed for easy grip.



Unmatched Warranty & Services

LG has the industry leading support policies. 5 year product warranty, 12 year 90% power warranty, and 25 year 80% power warranty.

